



Tucker Summit CID Freight Cluster Plan



Agenda:

- **Introductions:** Steering Committee, Project Team
- **Plan Overview:** Purpose, Tasks and Schedule, Status Report
- **Cargo Oriented Development:** Core Steps, Proven Example, Interviews
- **Stakeholder Input Session:** Vision, Goals and Objectives
- **Next Steps:** Inventory and Assessment Report, Issues and Needs

The Team:



- Lead Firm: Project Identification and Prioritization, Freight and Economic Analysis



- Work Program Development, Roadway Design, GDOT Coordination



- Stakeholder and Public Involvement, Transit and TDM Analysis



- Cargo-Oriented Development, Land Use and Zoning



- Market and Real Estate Assessment

Purpose: Identify strategies to improve freight mobility and make TSCID more attractive to industry and economic development

Key focus areas:



Identify and program transportation improvements specific to freight



Promote economic development



Identify complementary market sectors



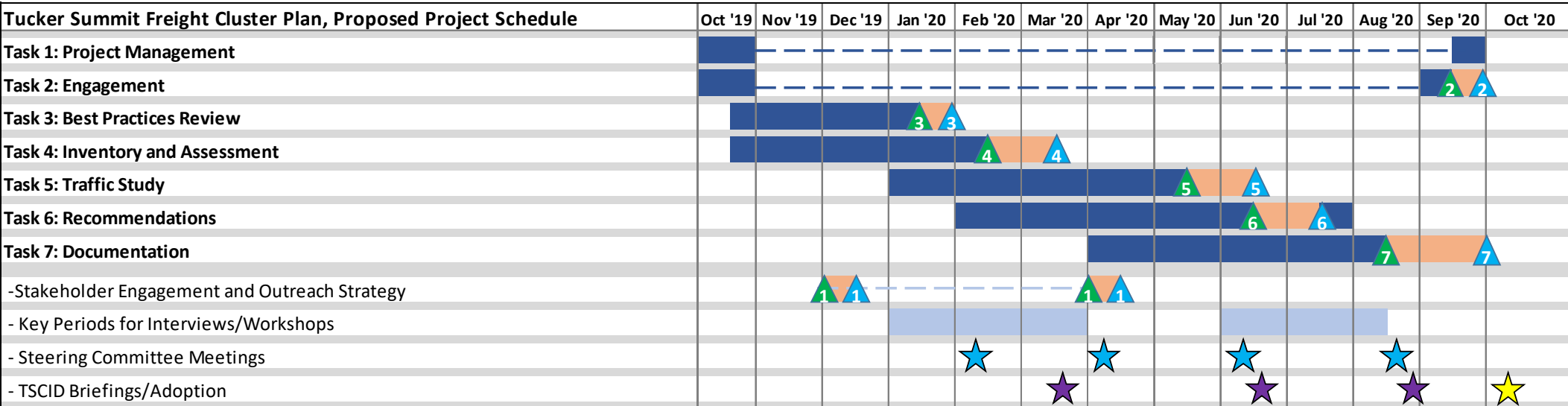
Promote efficient transportation solutions



Investigate innovative design concepts



Engaging the private sector



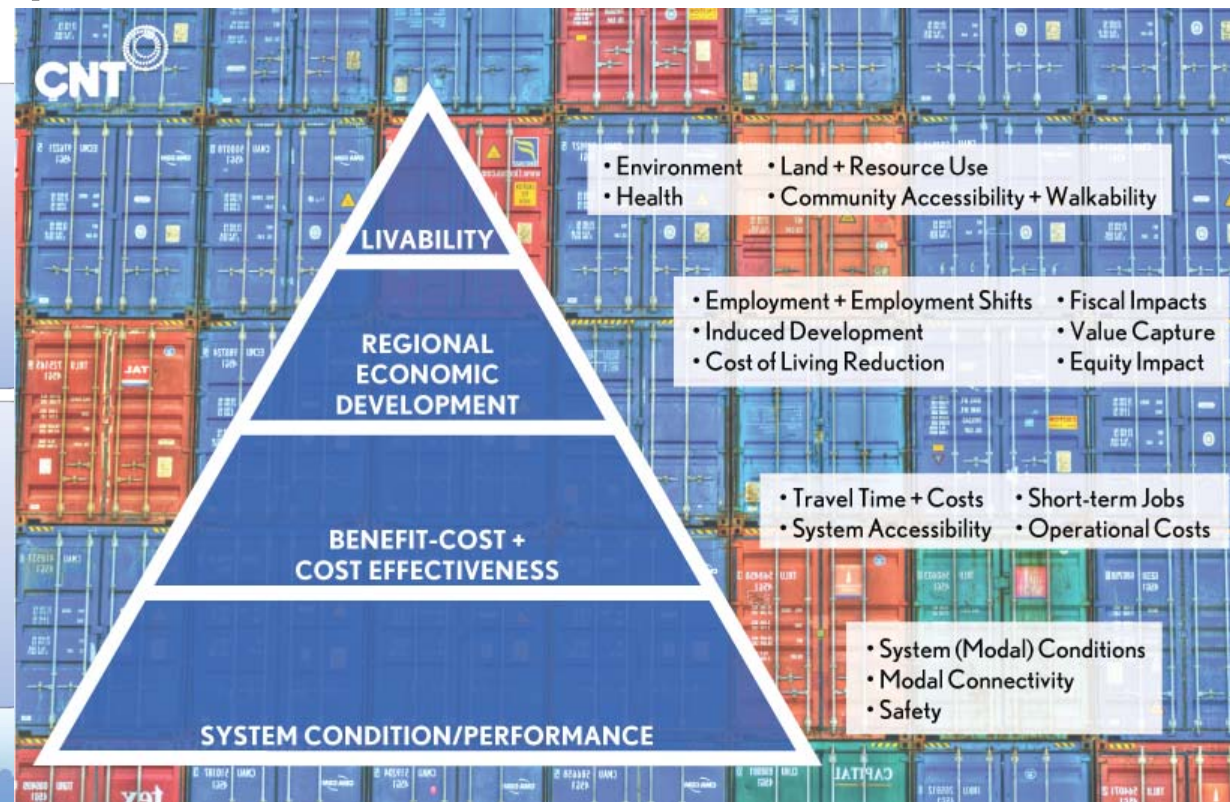
- Steering Committee Meetings
- Best Practices Report
- Denotes Internal Review Period
- TSCID Briefings
- Inventory and Assessment Report
-
- Adoption by TSCID
- Traffic Study Report
- Fiscally Constrained Short-Term Action Plan and Fiscally Unconstrained Long-Term Vision Project List
- Stakeholder Engagement and Outreach Strategy (and Reevaluation)
- Recommendations Final Report and Executive Summary
- Summary of Public Involvement Activities



Cargo Oriented Development

Integrate freight system efficiency with manufacturing and logistics business development

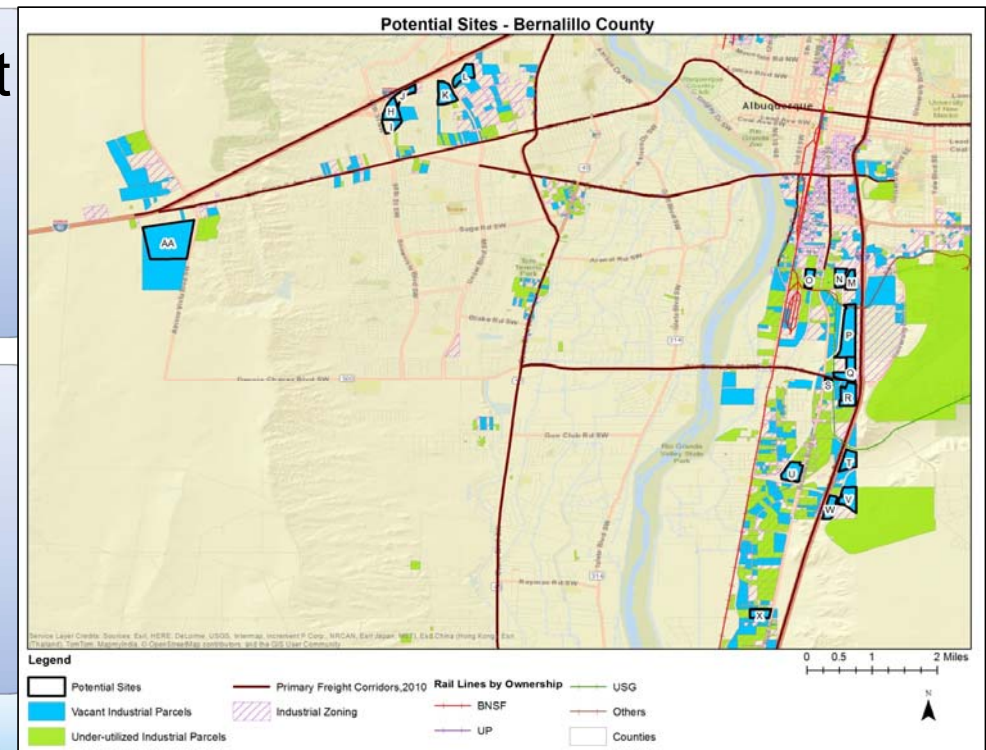
Identify strategies to benefit local economies, the environment, and public safety



Cargo Oriented Development Analysis:

Assess existing and planned freight and industrial land uses, zoning regulations and development standards

Analyze clusters of industrial land, including industry composition, employment characteristics, freight access, and development potential



Cargo Oriented Development Analysis:

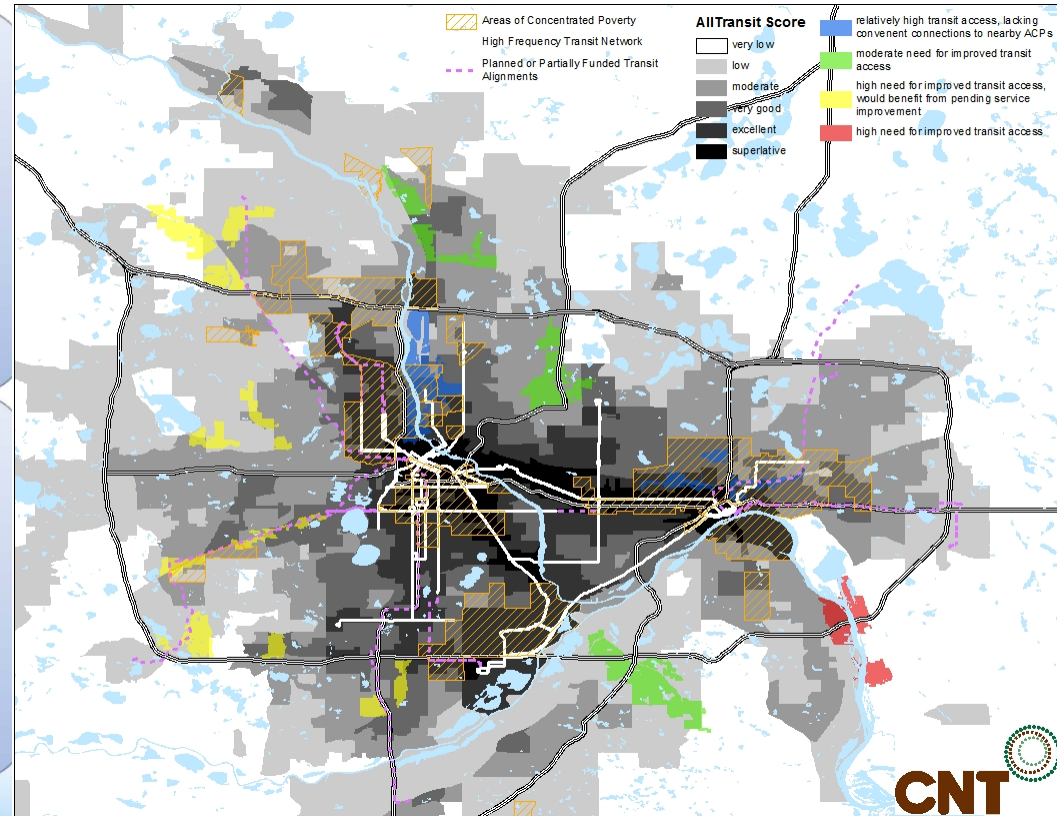
Assess alignment of existing freight assets, modal options, and services with industries and areas prioritized by COD land use analysis



Cargo Oriented Development Analysis:

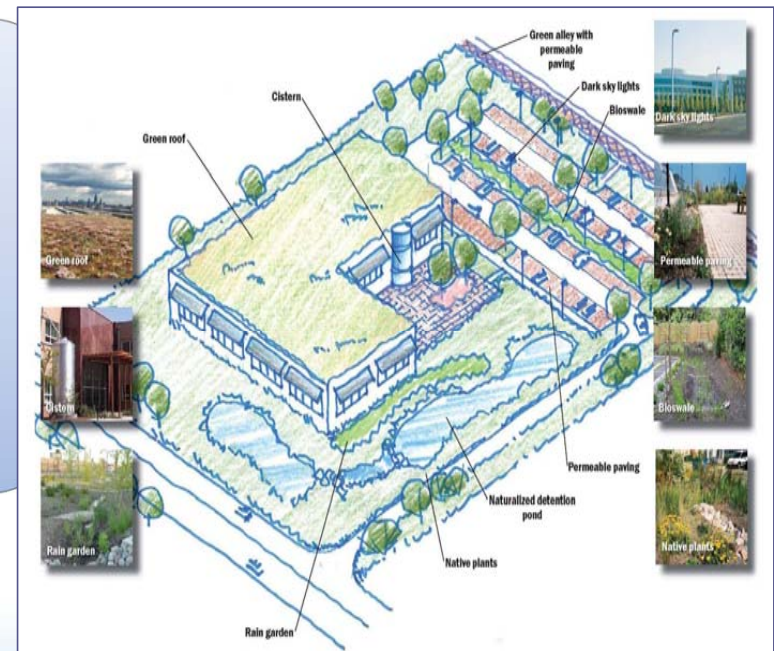
Assess workforce characteristics and locations, areas of concern, and proximity/alignment with key industry demand and COD districts

Assess alternatives to driving alone to industrial jobs, particularly for low income communities and for potential workers in training



Cargo Oriented Development Analysis:

Assess impacts of current and planned freight transportation and industrial land use patterns on a local priorities, including air and water quality, traffic congestion, public safety, noise, complete streets



COD In Action: Sterling Lumber, Harvey IL

Large vacant site in mature industrial district

Excellent freight and worker access

End user and developer interest

Local, State, and federal investment in infrastructure, cleanup

Sterling now employs over 200 workers, many recruited and trained by a local workforce development organization



Stakeholder Input Session: Vision, Goals and Objectives

What do we hope to accomplish?



What should be our priorities?



What types of industries would we like to attract?



Any other interested parties we should contact for interviews?



Next Steps:



Report on Cargo-Oriented Development Activities and Analysis



Present Results of Inventory and Assessment



Stakeholder Input Session: Issues and Needs