



Infrastructure Improvements | Curb Appeal | Economic Development | Public Safety | Increase Property Values



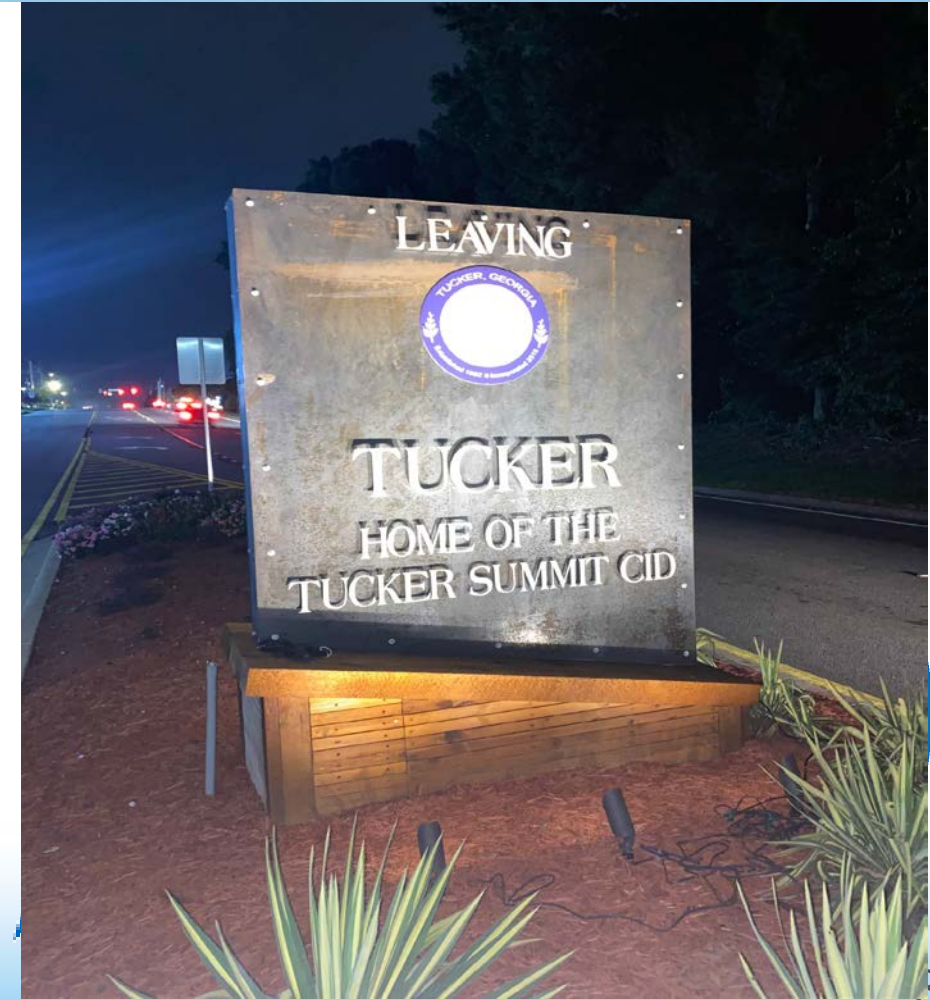
2021 IS A SPECIAL YEAR FOR THE CID

10 YEAR ANNIVERSARY !!!



INFRASTRUCTURE IMPROVEMENTS

Past – Present - Future

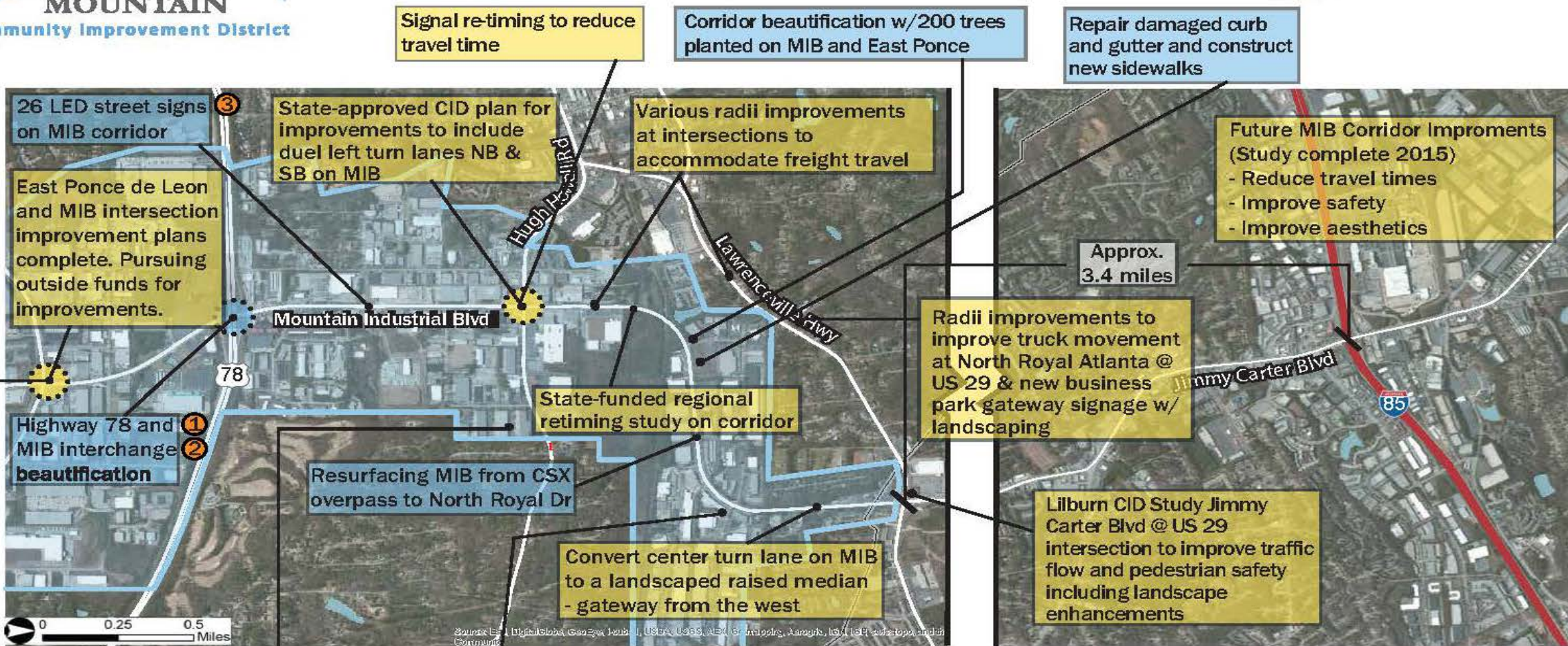


2011-2020

- Guardrail painting, repair and replacement
- Replacement of more than 200 damaged street signs
- Concrete and asphalt repairs
- Removal of diseased trees
- 400 trees planted along Mountain Industrial and East Ponce de Leon
- Royal Atlanta Business Park median landscaping
- MIB Median Street Lighting
- CID/City Gateway Signage on MIB
- Intersection turn radius improvements
- GTIB Infrastructure Grant for 78/MIB Interchange
- Mountain Industrial median landscaping
- New Raised Landscape Median at Gwinnet Co. Line
- New intersection mast arms
- ARC Freight Cluster and Economic Development Grants
- Mountain Industrial traffic flow improvements and GDOT Retiming Program
- GDOT approval of CID plan for intersection improvements; SR 236 @ MIB
- Mountain Industrial @ Highway 78 bridge lighting
- Districtwide right-of-way cleanup and mowing yearly
- Installation of internally illuminated LED street name signs on MIB
- CSX bridge repairs



Mountain Ind. Blvd. Improvements ("Incredible Corridor")



10 "LED" bridge lighting installed MIB bridge over Hwy 78

Radii improvements Flintstone @ Hugh Howell Rd to improve truck movement

Landscape Master Plan for corridor approved by CID board - short term improvements to be implemented 2016 and 2017



COMPLETION IN 2014
PARDON OUR PROGRESS
Gateway Beautification Project
For more information, visit our website at www.StoneMountainCID.com



LEGEND

- Completed Projects
- 2016-2019 Initiatives
- Stone Mountain CID Boundary

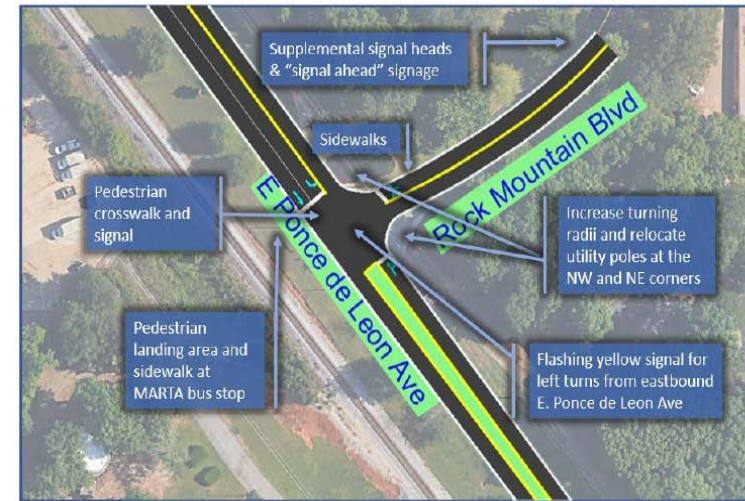
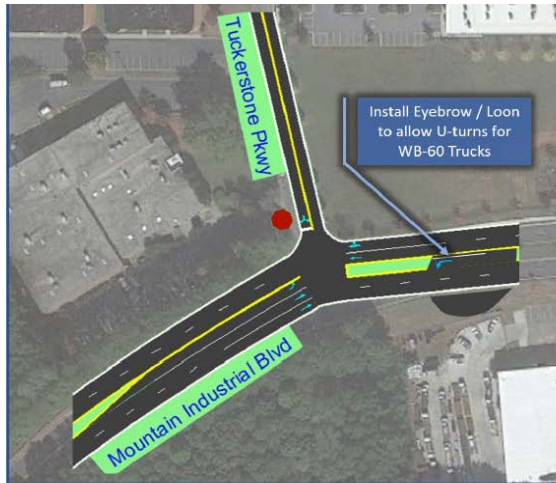
WHERE ARE WE NOW?

PLANNING STUDIES - GRANT FUNDS – STRATEGIC PARTNERSHIPS BEGINNING TO BEAR FRUIT!



SHORT & LONG RANGE INFRASTRUCTURE IMPROVEMENTS

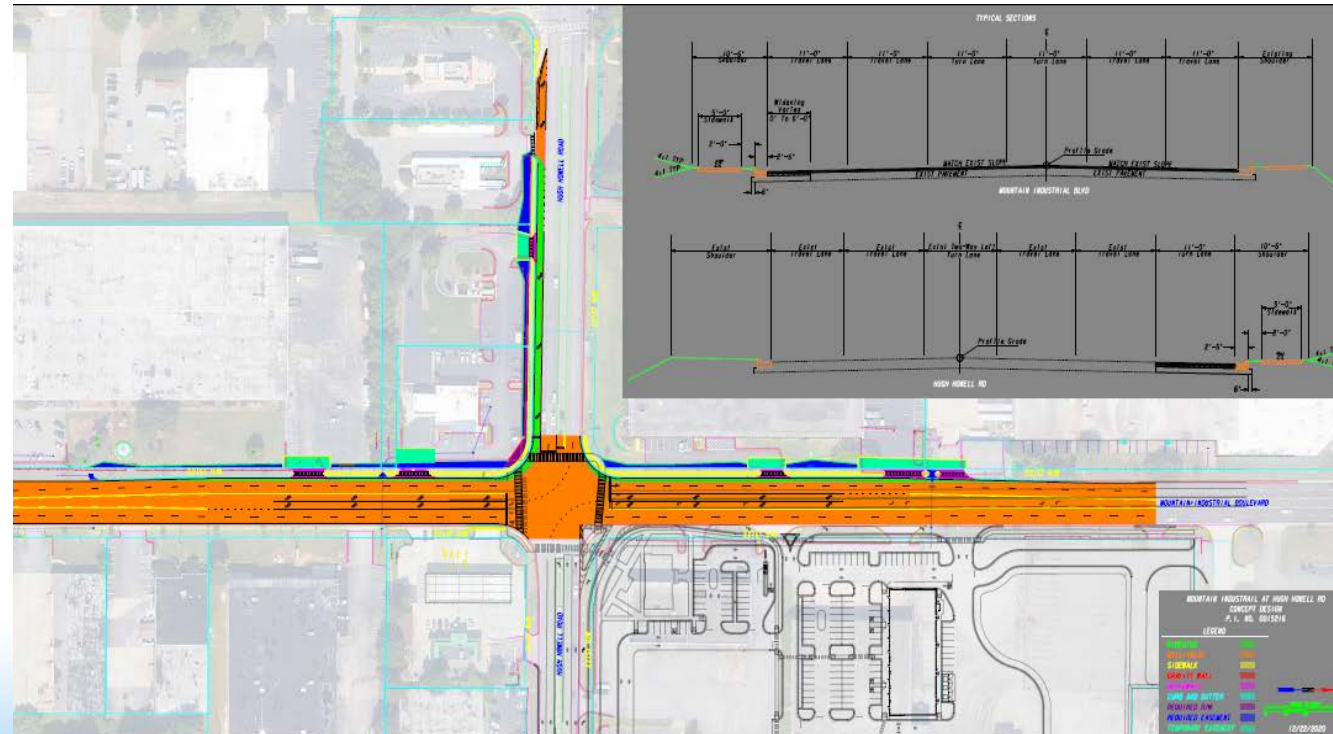
SHORT RANGE EXAMPLE CONSTRUCTION 2022



SHORT & LONG RANGE INFRASTRUCTURE IMPROVEMENTS

SHORT RANGE EXAMPLE CONSTRUCTION 2023/2024

SR 236 (Hugh
Howell Road
at Mtn. Ind. Blvd



SHORT & LONG RANGE INFRASTRUCTURE IMPROVEMENTS

LONG RANGE EXAMPLE – CONST 2025/2026

HWY 78 INTERCHANGE AND MOUNTAIN INDUSTRIAL BLVD PROJECT LIMITS: GREER TO ELMDALE



RETURN ON INVESTMENT

2011 TO 2016

\$942,000 – Outside funds received by the CID

\$256,000 – CID matching funds

ROI – 4 TO 1

2016 - 2021

\$8,000,000 – Outside grant \$ received by CID and government infrastructure

\$500,000 – CID matching funds

ROI – 16 TO 1

CID SUCCESS = PARTNERSHIPS

THE MANY SUCCESSFUL INFRASTRUCTURE PROJECTS IN THE CID DEMONSTRATES THE VALUE OF A SUCCESSFUL PUBLIC-PRIVATE COLLABORATION.

THANK YOU MAYOR, CITY COUNCIL &
STAFF!