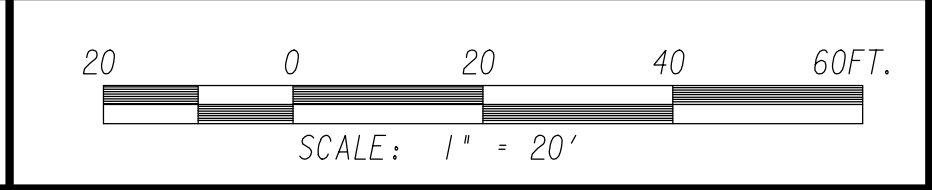
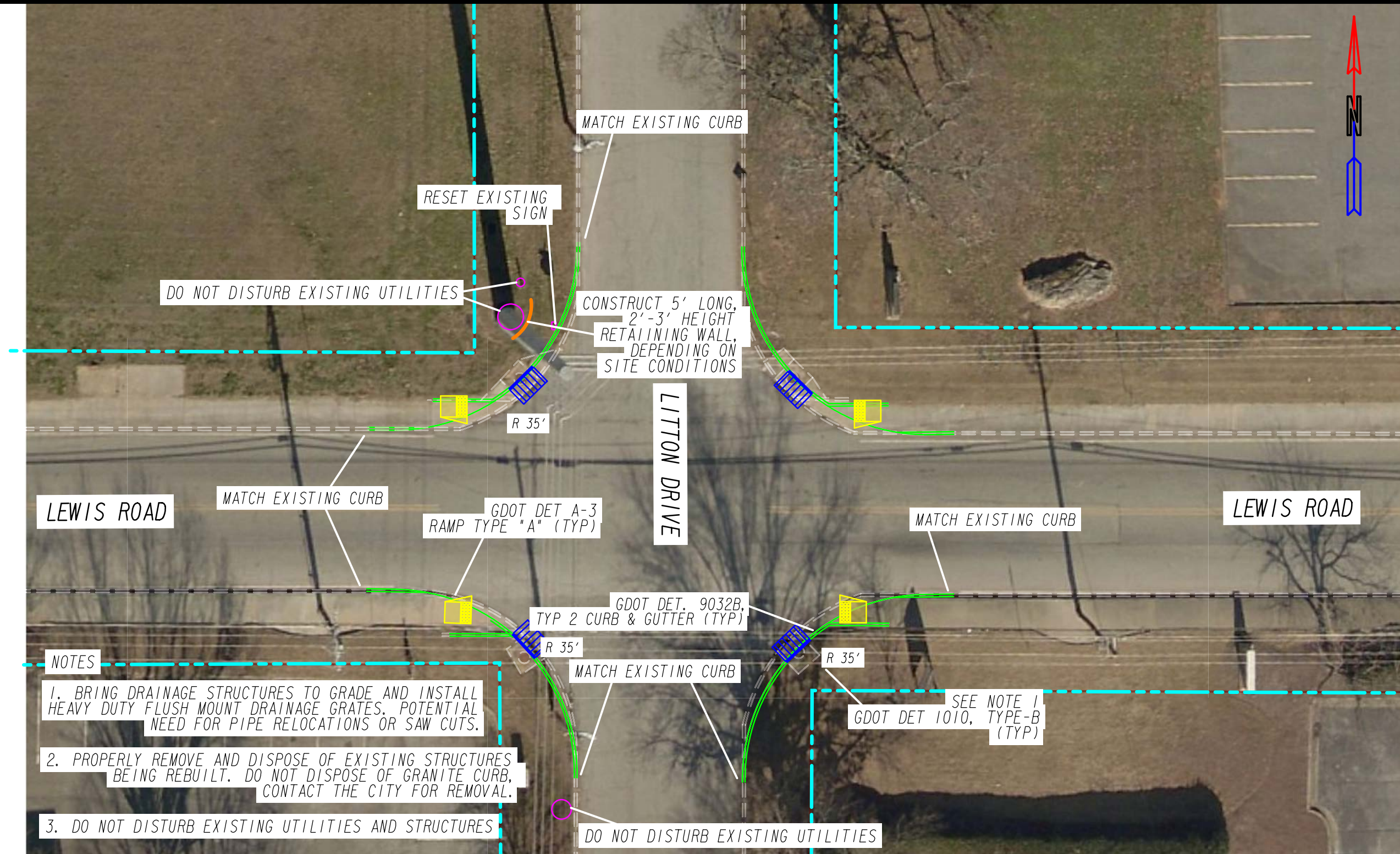


**NOTES**

1. BRING DRAINAGE STRUCTURES TO GRADE AND INSTALL HEAVY DUTY FLUSH MOUNT DRAINAGE GRATES. POTENTIAL NEED FOR PIPE RELOCATIONS OR SAW CUTS.
2. PROPERLY REMOVE AND DISPOSE OF EXISTING STRUCTURES BEING REBUILT. DO NOT DISPOSE OF GRANITE CURB, CONTACT THE CITY FOR REMOVAL.
3. DO NOT DISTURB EXISTING UTILITIES AND STRUCTURES

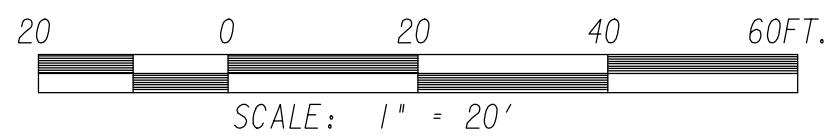
PROPERTY LINE	
EXISTING PAVEMENT	
CURB & GUTTER	
DRAINAGE GRATE	

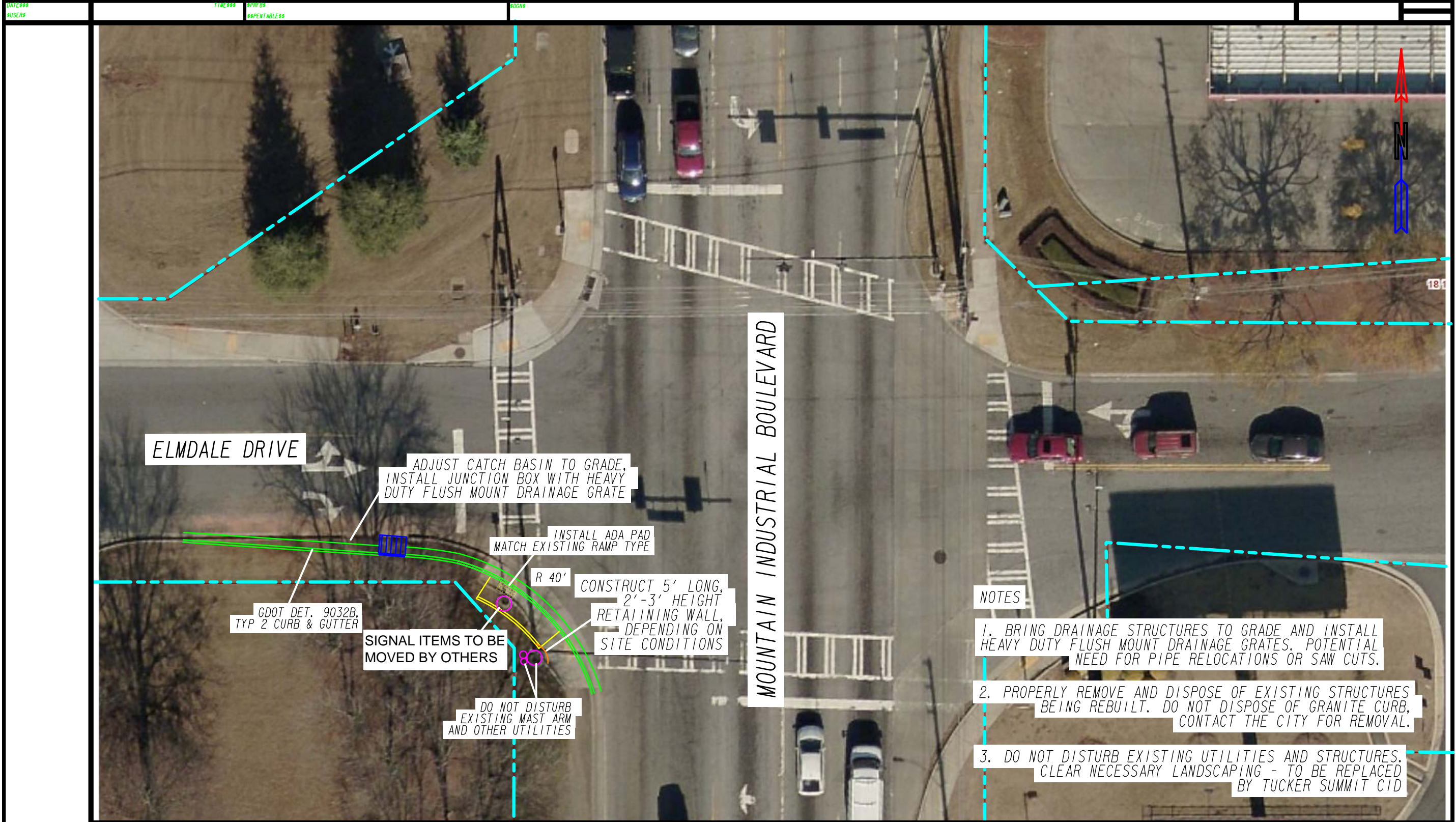


- NOTES**
1. BRING DRAINAGE STRUCTURES TO GRADE AND INSTALL HEAVY DUTY FLUSH MOUNT DRAINAGE GRATES. POTENTIAL NEED FOR PIPE RELOCATIONS OR SAW CUTS.
  2. PROPERLY REMOVE AND DISPOSE OF EXISTING STRUCTURES BEING REBUILT. DO NOT DISPOSE OF GRANITE CURB, CONTACT THE CITY FOR REMOVAL.
  3. DO NOT DISTURB EXISTING UTILITIES AND STRUCTURES

PROPERTY LINE	
EXISTING PAVEMENT	
CURB & GUTTER	
DRAINAGE GRATE	



ELMDALE DRIVE

MOUNTAIN INDUSTRIAL BOULEVARD

ADJUST CATCH BASIN TO GRADE,  
INSTALL JUNCTION BOX WITH HEAVY  
DUTY FLUSH MOUNT DRAINAGE GRATE

INSTALL ADA PAD  
MATCH EXISTING RAMP TYPE

R 40'

CONSTRUCT 5' LONG,  
2'-3' HEIGHT  
RETAINING WALL,  
DEPENDING ON  
SITE CONDITIONS

GDOT DET. 9032B,  
TYP 2 CURB & GUTTER

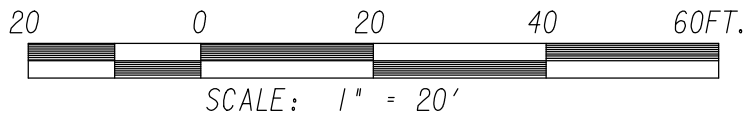
SIGNAL ITEMS TO BE  
MOVED BY OTHERS

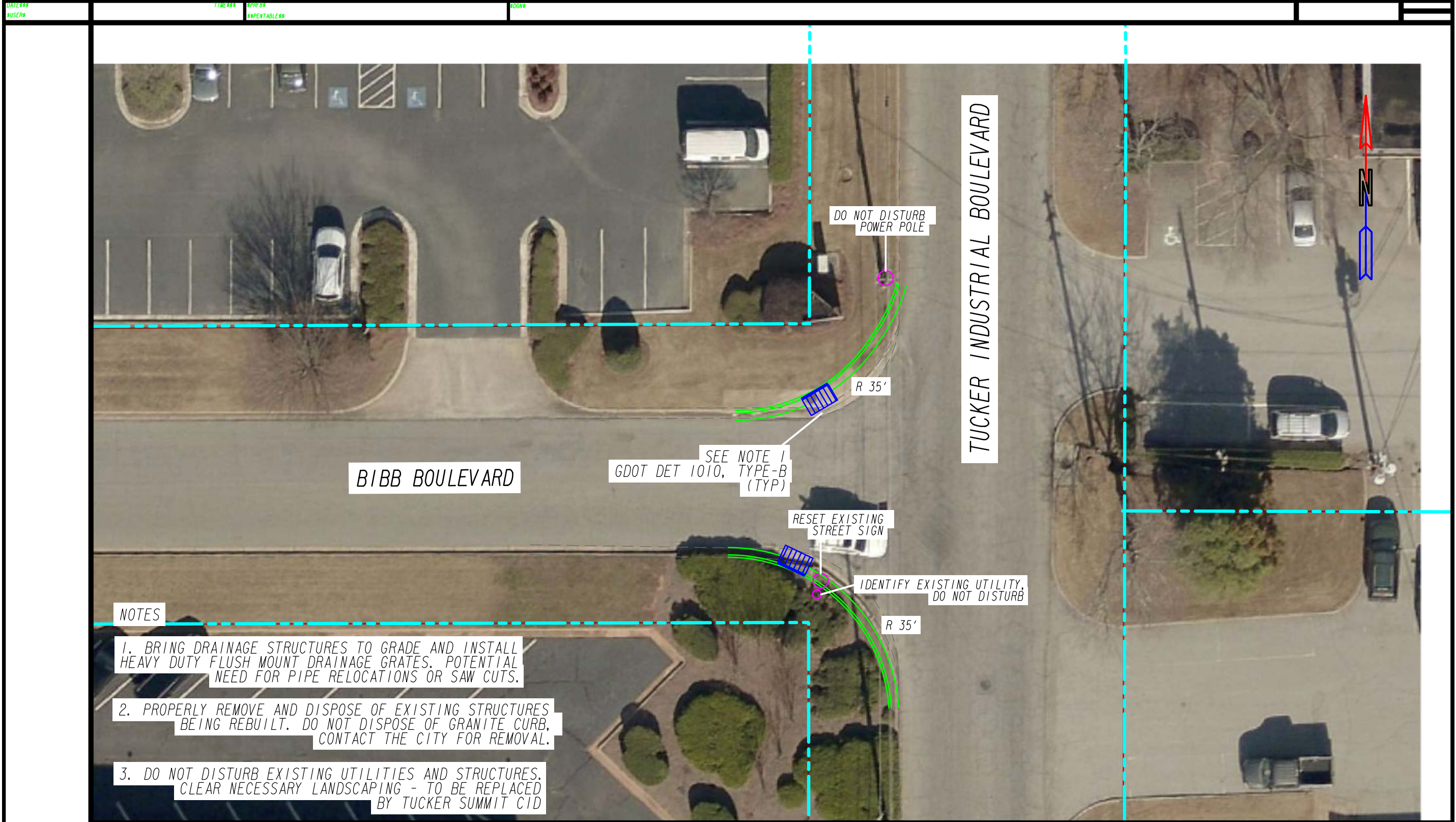
DO NOT DISTURB  
EXISTING MAST ARM  
AND OTHER UTILITIES

NOTES

1. BRING DRAINAGE STRUCTURES TO GRADE AND INSTALL HEAVY DUTY FLUSH MOUNT DRAINAGE GRATES. POTENTIAL NEED FOR PIPE RELOCATIONS OR SAW CUTS.
2. PROPERLY REMOVE AND DISPOSE OF EXISTING STRUCTURES BEING REBUILT. DO NOT DISPOSE OF GRANITE CURB, CONTACT THE CITY FOR REMOVAL.
3. DO NOT DISTURB EXISTING UTILITIES AND STRUCTURES. CLEAR NECESSARY LANDSCAPING - TO BE REPLACED BY TUCKER SUMMIT CID

PROPERTY LINE	
EXISTING PAVEMENT	
PROPOSED PAVEMENT	
CURB & GUTTER	
DRAINAGE GRATE	

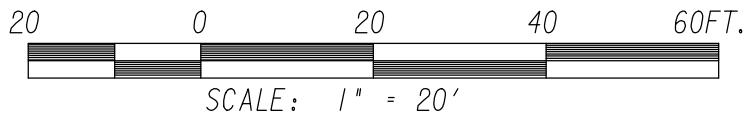


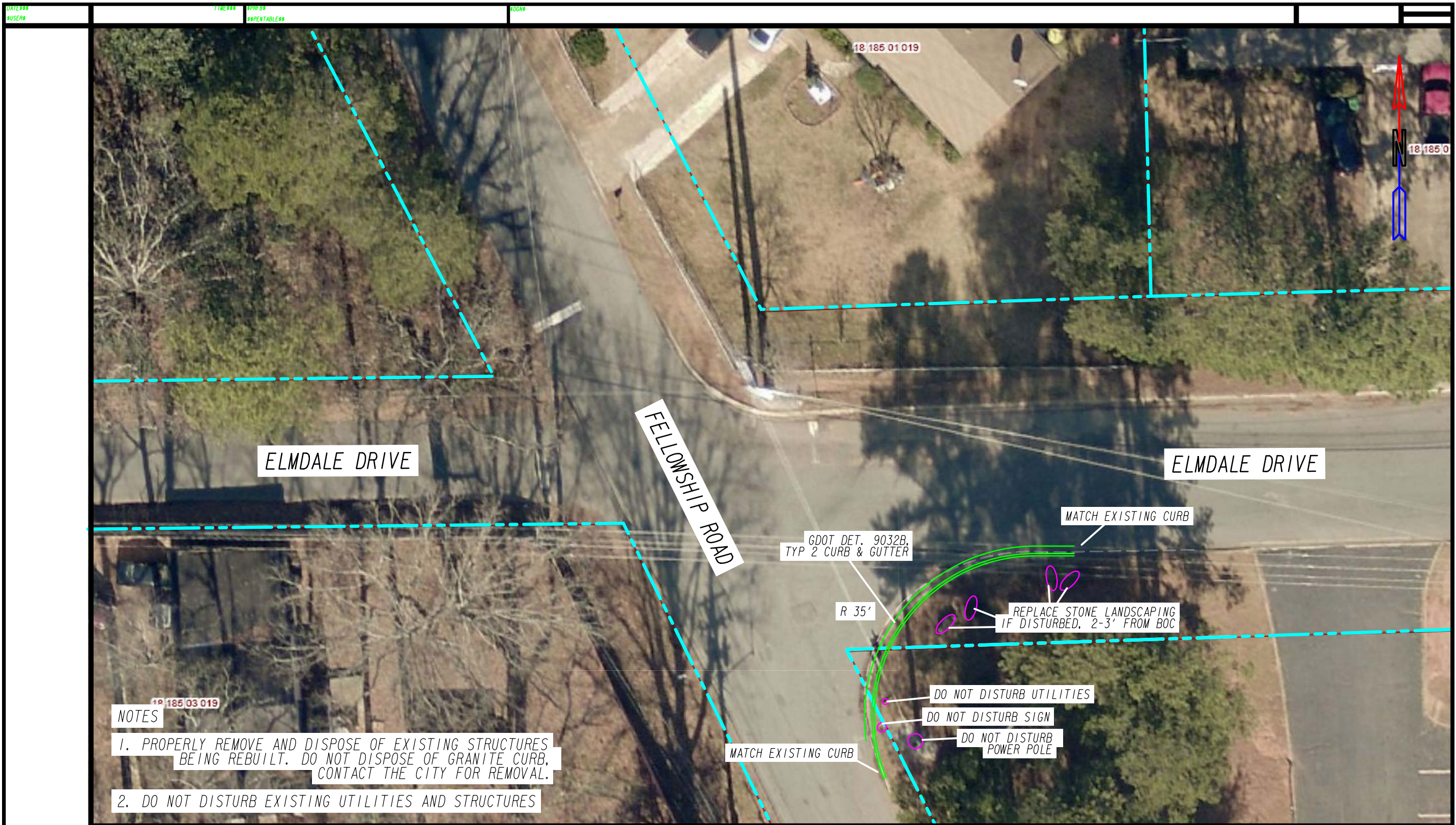



**NOTES**

1. BRING DRAINAGE STRUCTURES TO GRADE AND INSTALL HEAVY DUTY FLUSH MOUNT DRAINAGE GRATES. POTENTIAL NEED FOR PIPE RELOCATIONS OR SAW CUTS.
2. PROPERLY REMOVE AND DISPOSE OF EXISTING STRUCTURES BEING REBUILT. DO NOT DISPOSE OF GRANITE CURB, CONTACT THE CITY FOR REMOVAL.
3. DO NOT DISTURB EXISTING UTILITIES AND STRUCTURES, CLEAR NECESSARY LANDSCAPING - TO BE REPLACED BY TUCKER SUMMIT CID

PROPERTY LINE	
EXISTING PAVEMENT	
PROPOSED PAVEMENT	
CURB & GUTTER	
DRAINAGE GRATE	

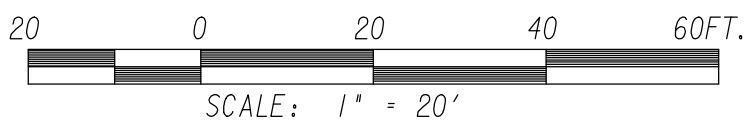


**NOTES**

1. PROPERLY REMOVE AND DISPOSE OF EXISTING STRUCTURES BEING REBUILT. DO NOT DISPOSE OF GRANITE CURB, CONTACT THE CITY FOR REMOVAL.
2. DO NOT DISTURB EXISTING UTILITIES AND STRUCTURES

PROPERTY LINE  
 EXISTING  
 PROPOSED PAVEMENT  
 CURB & GUTTER



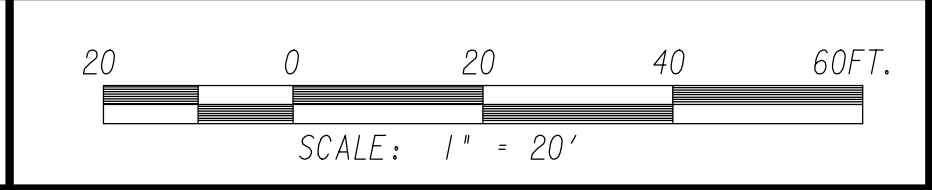


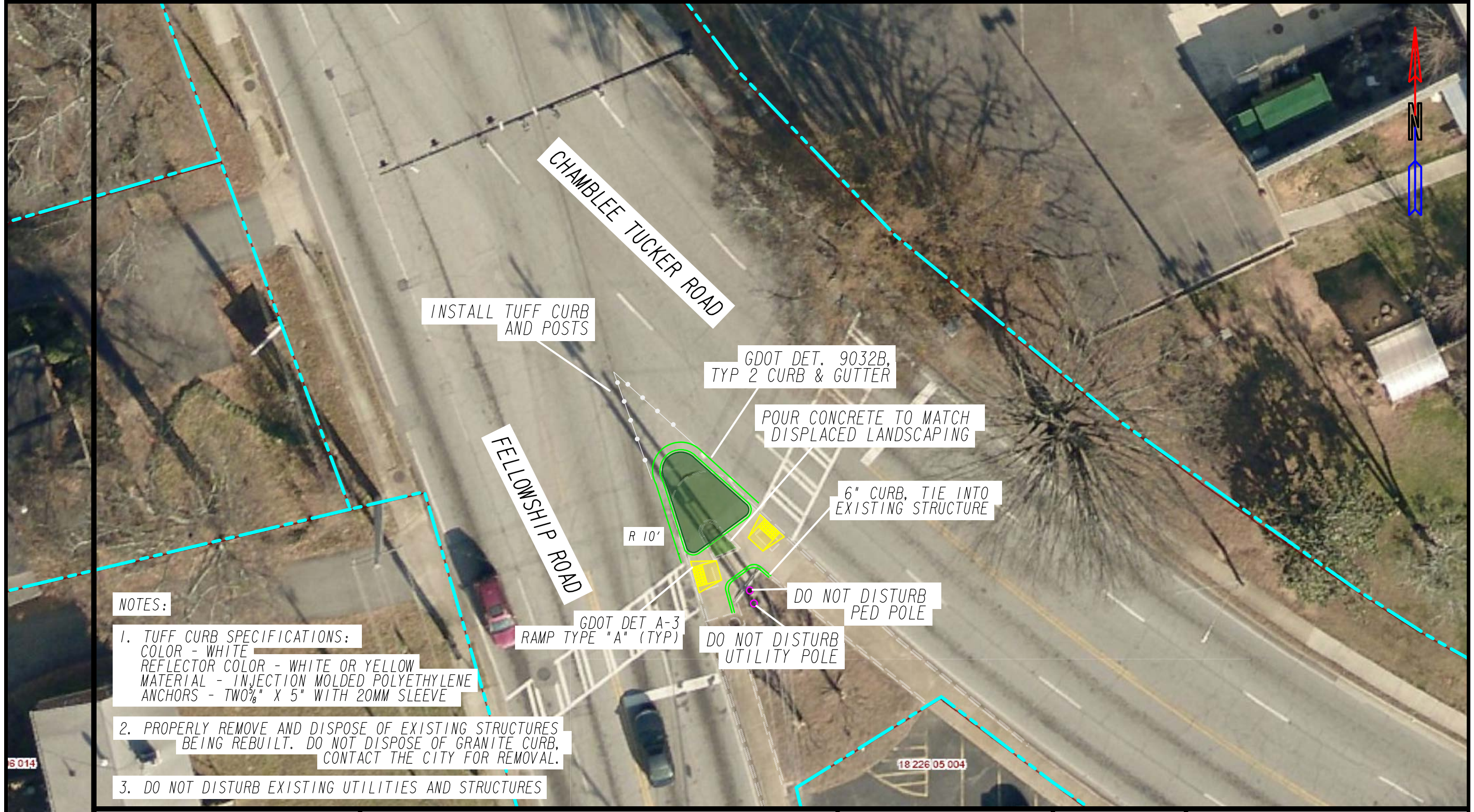



**NOTES**

1. PROPERLY REMOVE AND DISPOSE OF EXISTING STRUCTURES BEING REBUILT. DO NOT DISPOSE OF GRANITE CURB, CONTACT THE CITY FOR REMOVAL.
2. DO NOT DISTURB EXISTING UTILITIES AND STRUCTURES

PROPERTY LINE	
EXISTING PAVEMENT	
CURB & GUTTER	
GUARDRAIL	



**NOTES:**

1. TUFF CURB SPECIFICATIONS:  
 COLOR - WHITE  
 REFLECTOR COLOR - WHITE OR YELLOW  
 MATERIAL - INJECTION MOLDED POLYETHYLENE  
 ANCHORS - TWO 3/8" X 5" WITH 20MM SLEEVE
2. PROPERLY REMOVE AND DISPOSE OF EXISTING STRUCTURES BEING REBUILT. DO NOT DISPOSE OF GRANITE CURB, CONTACT THE CITY FOR REMOVAL.
3. DO NOT DISTURB EXISTING UTILITIES AND STRUCTURES

S014

18 226 05 004

PROPERTY LINE	
EXISTING GRASSING	
CURB & GUTTER/CONCRETE	
TUFF CURB AND POSTS	

